

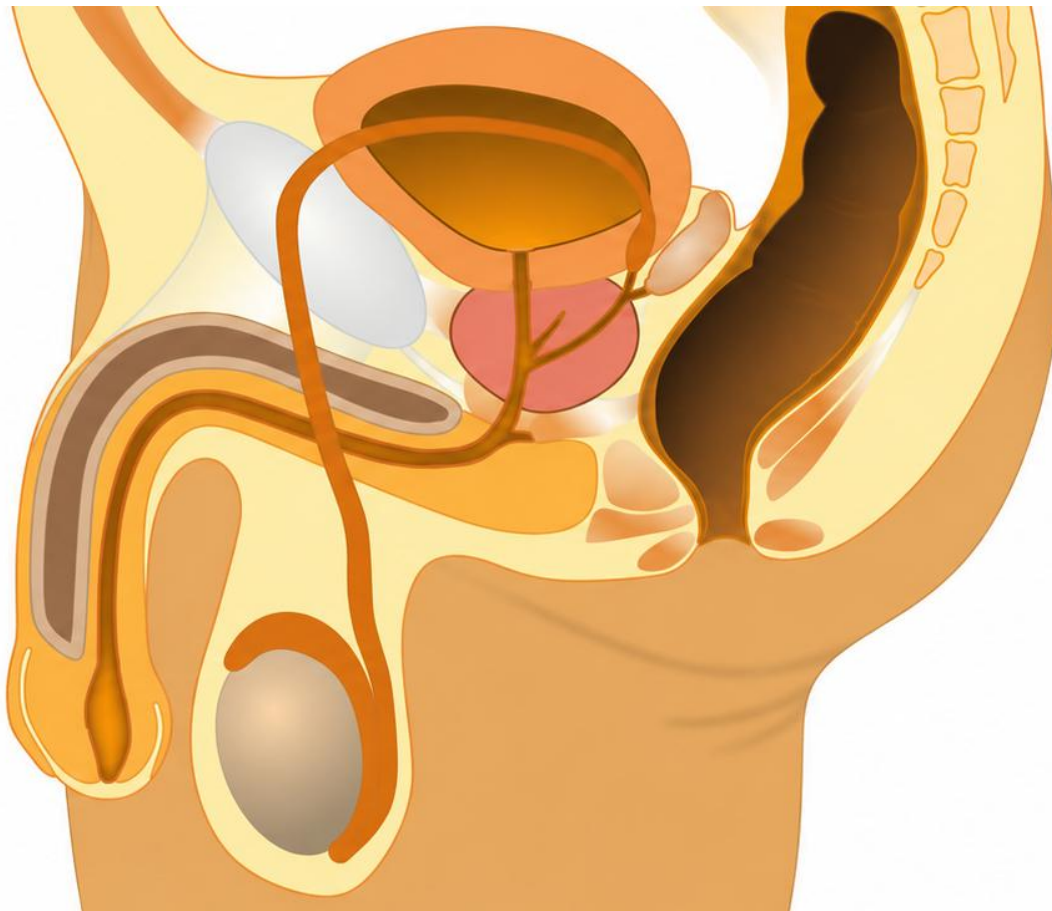
Year 12 into 13 summer task- Unit 6 Learning Aim A

Male reproductive system:

Label the diagram of the male reproductive system with the correct anatomy, then write a description and the function of these tissues/organs in the table.

Tissue/organ:

Epididymis, seminal vesicle, Cowper's gland, prostate gland, testes, penis, scrotum, vas deferens, erectile tissue



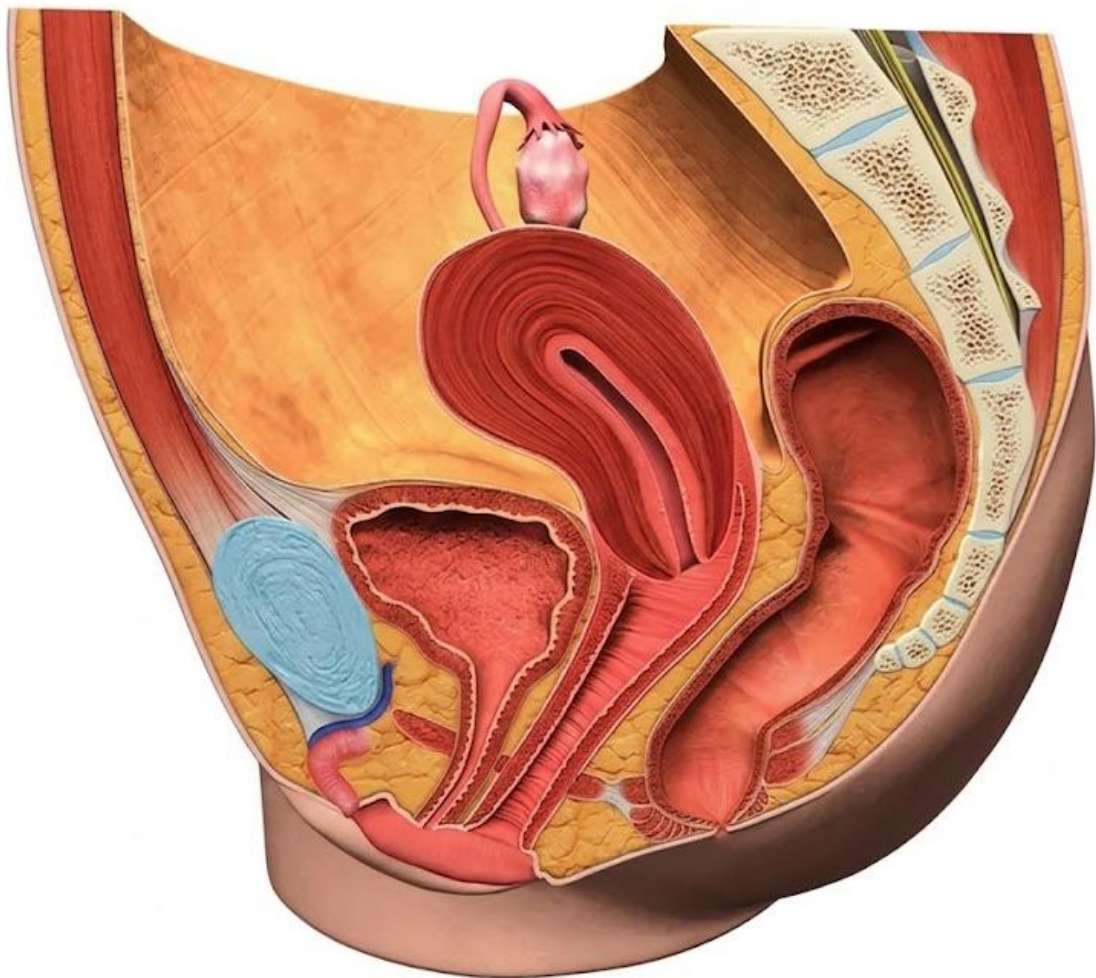
Tissue/organ	Description	Function
Epididymis		
Seminal Vesicle		
Cowper's gland		
Prostate gland		
Testes		
Penis		
Scrotum		
Vas deferens		
Erectile tissue		

Female reproductive system:

Label the diagram of the female reproductive system with the correct anatomy, then write a description and the function of these tissues/organs in the table.

Tissue/organ:

Ovary, oviduct (fallopian tube), uterus, uterine horn, fimbriae, endometrium, cervix, vagina, labia.



Tissue/Organ	Description	Function
Ovary		
Oviduct		
Uterus		
Uterine Horn		
Fimbriae		
Endometrium		
Cervix		
Vagina		
Labia		